

Antiques & Collectibles

A BearRidge Antiques 573.736.5858

17984 Highway 17 N, Crocker
Mon-Fri 10am-5pm, Sat 10am-4pm, Sun 1pm-4pm

B Holt House Antiques & Collectibles 573.736.2060

15749 Beaufort Road, Crocker
Mon - Fri 10am-5pm, Sat 10am-4pm, Sunday - Call for hours.

C Triple Creek Antiques 573.480.9855

616 Commercial Street, Crocker
Mon - Sat 10am-5pm, Sun 1pm-5pm

D Gate House 940.300.5019

620 Commercial Street, Crocker
Call for Hours

E Whatever Antiques & Collectibles 573.528.5267

215 W 2nd Street, Dixon
Mon - Fri 9am-5pm, Sat 9am-12pm

F Gascozark Flea Market 573.433.0284

Highways AB & 133 South (I-44 Exit 145), Richland
Sat 10am-3:30pm

G Route 66 Flea Market 573.765.5323

25845 Highway AB, Richland
Sat 8am-5pm

H The Brick Emporium 573.765.7990

219 S. Pine St, Richland
Mon-Sat 6am-8pm

I Penaroyal Antiques & Collectibles (2 Locations) 573.855.3259

107 S. Walnut St & 219 S. Walnut St, Richland
Fri-Sat 10am-4pm Thurs-Sat 10am-4pm

J Lost In the Woods Antiques & Collectibles 573.433.2855

218 B. Historic Rt 66, Waynesville
Tues-Thurs 10am-5:30pm, Fri 10am-5pm, Sat. 9am-5pm

K Talbot House Antiques, Collectibles & Gifts 573.774.6096

405 North St, Waynesville
Tues - Fri 11am-5:30pm & Sat 11am-4pm

Sweets & Treats!

Baskin Robbins 573.329.2200
143 Replacement Avenue, Ft. Leonard Wood

Fudge Factory & Route 66 General Store 573.336.8758
14470 Hwy Z, St. Robert

G's Cupcake Euphoria 804.504.6868
Clayton Towers, 690 Missouri Avenue, (Suite 24) St. Robert

I Love Ice Cream 573.855.5663
Clayton Towers, 690 Missouri Avenue, (Suite 14) St. Robert

Dunkin' Donuts 573.329.0698
2624 Missouri Ave, Ft. Leonard Wood

Lamb's Donuts 573.336.3368
115 Gateway Circle, St. Robert

Smallcakes: A Cupcakery & Creamery 573.451.2611
213 St. Robert Blvd Ste. 2, St. Robert

Moonicorn Creamery & Funnel Cakery 573.336.8758
14400 Highway Z, St. Robert

Sanctuary Coffee & Quilt 573.855.8300
111 S. Pine St, Richland

The Brick Emporium 573.765.7990
219 S. Pine St, Richland

Gift Shops

Just Because	573.774.4995	115 N. Benton St. Waynesville
Eclectic Originals	573.337.2494	225 Historic 66 E. Waynesville
Endlessly Blessed Boutique	910.750.6651	690 Missouri Ave. Ste 26 St Robert
Route 66: Community Art Gallery	573.528.1292	107 E. Historic 66 Waynesville

Please visit our website for other retail outlets offering gift sections within their salons, restaurants, floral shops.

Quilting

Sanctuary Coffee & Quilts 573.855.8300 111 S Pine, Richland
The Thread Peddler 573.774.2658 23470 Sage Rd, Waynesville

Take a moment to visit a real antique!
The longest running business opened in 1869

H.E. Warren Store 573.765.3381
Pine Street & McClurg Avenue, Richland

Pulaski
countyUSA
missouriUSA
A welcome place in America's Heartland.

137 St Robert Blvd. Suite A
Saint Robert, MO 65584
573.336.6355

PulaskiCountyUSA.com
email@PulaskiCountyUSA.com

Pulaski County USA Antique & Sweet Trail

**Find a treasure or
unique gift & satisfy
your sweet tooth with a
tour of antique & sweet
shops in Pulaski County**



***Travel the trail in
any order you wish,
just make sure you
visit them all!***

Information provided
compliments of
Pulaski County Tourism Bureau



Letters correspond with antique shop listing on reverse.

F, G
Richland

A, B, C, D

E

J, K,
Waynesville

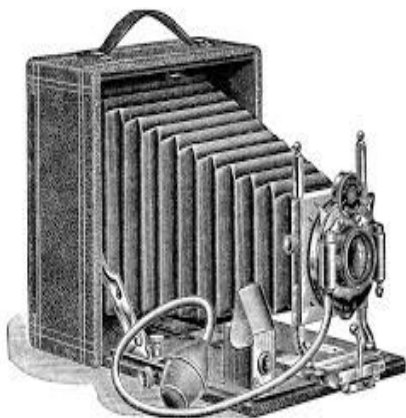
Devil's Elbow-Rt 66

H
I
Laquey

Exit 153
Buckhorn

Saint Robert

Fort Leonard Wood



Pulaski
county
missouri **USA**
A welcome place in America's Heartland.



Take the guesswork out of getting around the area and download the FREE mobile phone Pulaski County USA app!

Scan this QR Code with your Smart Phone and download the trail!